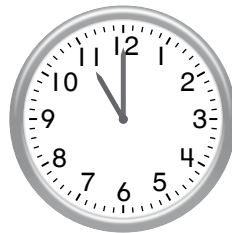
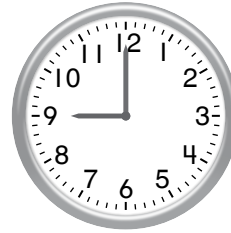


1. Luis eats lunch after 10 o'clock and before 2 o'clock every day. Which clocks show the time Luis might each lunch? Choose all that apply. **1 point**

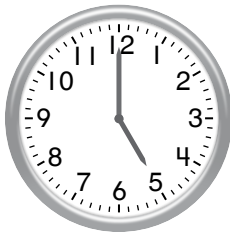








2. Which clock shows the same time as the clock face? **1 point**



(A)



(B)



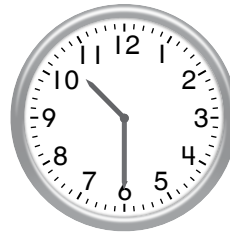
(C)



(D)



3. Write the time that is shown on the clock face. **1 point**



4. Emma swims for a half hour. How many minutes is this?

1 point

(A) 15

(B) 30

(C) 60

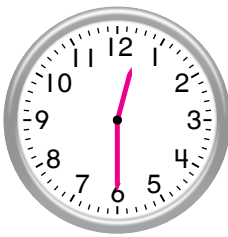
(D) 90

5. Write the numbers to complete the sentence. 1 point

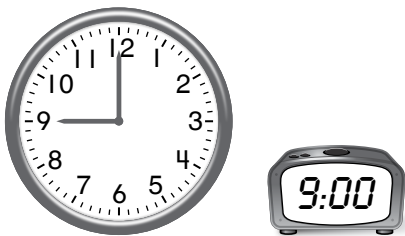
When it is time to leave school, the hour hand is between 9 and 10.

A Trip to the Zoo	
Time	Activity
9:30	Leave School
10:00	Zoo Tour
11:30	Lunch
12:30	Movie
2:00	Leave Zoo

6. Draw hands on the clock face to show the time that the movie starts. 1 point



7. Do both clocks show the same time? How do you know you are correct? 3 points



Yes; Sample answer: The short hand points to the hour, and it is pointing to the 9. When the minute hand points to the 12, that means 0 minutes past the hour. So, both clocks show 9 o'clock.

A Busy Day

Ben has a busy day on Saturday! The chart shows his schedule.

Ben's Schedule	
Time	Activity
8:30	Breakfast
9:30	Soccer
11:00	Shopping
1:30	Lunch
3:30	Basketball
5:00	Birthday Party

1. Show another way to write the time for each activity. **1 point**

Birthday Party

5 o'clock

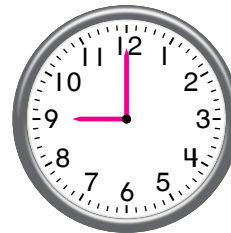
Breakfast

30 past 8 or half past 8

2. Draw the hands on the clock to show the time for Lunch. **1 point**



3. Ben leaves his house 30 minutes before Soccer. Draw the hands and write the time on the clocks to show what time he leaves his house. **2 points**



4. Ben goes shopping with his family for 30 minutes.

Part A

What time will it be when they finish shopping?
Choose a way to show the time. **2 points**

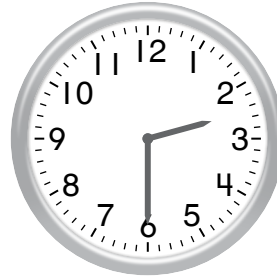
11:30;
Check students' drawings or explanations.

Part B

Ben and his family will be back home 30 minutes after they finish shopping.
What time will it be then?
Choose a way to show the time. **2 points**

12:00;
Check students' drawings or explanations.

5. Ben says that this clock shows the same time that Basketball starts. **3 points**



Do you agree with him?

Circle **Yes** or **No**.

Explain your answer.

Sample answer: The hour hand is between 2 and 3, so this clock shows 2:30, or half past 2. Basketball is at 3:30. For this clock to show 3:30, the hour hand should be between 3 and 4.