

This book belongs to:

TOPIC

12 Story

Written by Liz West  
Illustrated by Jim Steck

# Help Us Measure



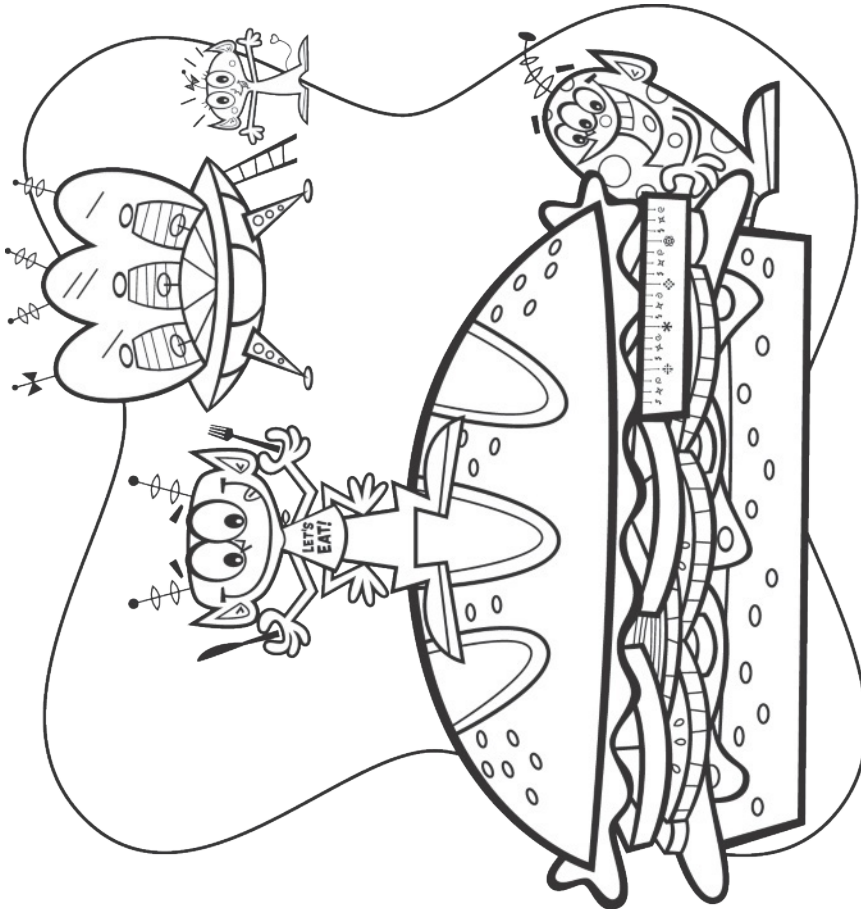
We come from space!

Help us measure the

It is about  long.



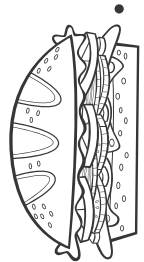
fold down

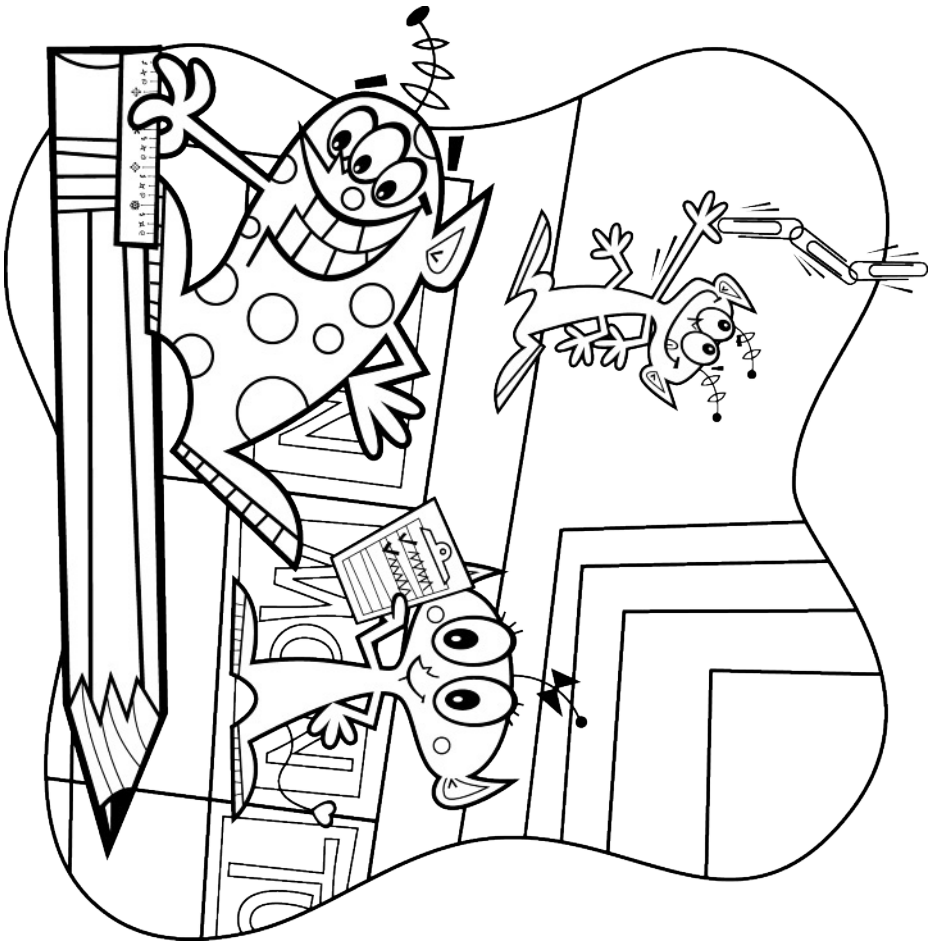


We are hungry!

Help us measure the

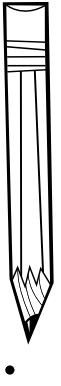
It is about  long.





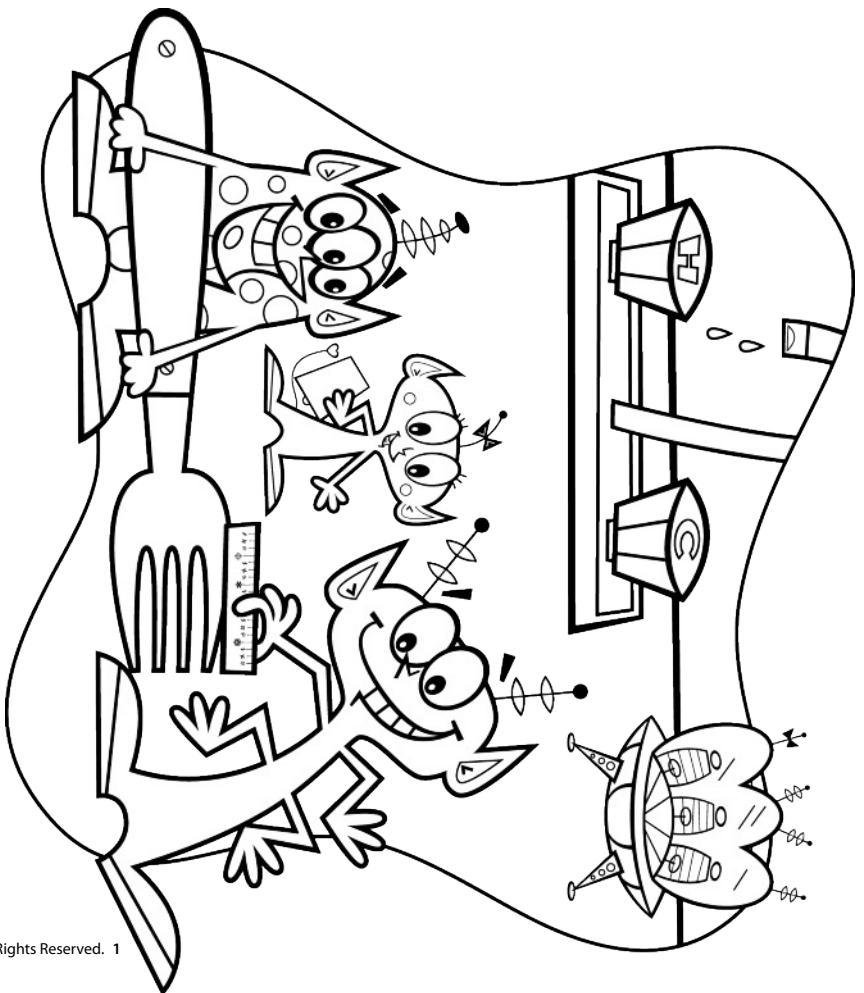
**We find new things!**

**Help us measure the**



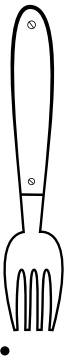
**It is about \_\_\_\_\_ long.**

fold down



**What a big place!**

**Help us measure the**



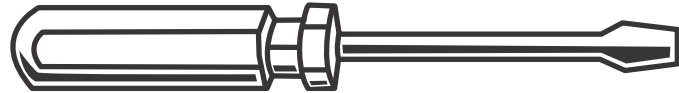
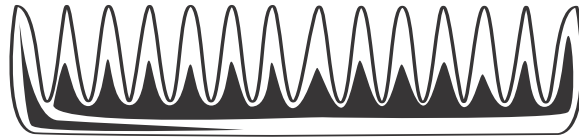
**It is about \_\_\_\_\_ long.**

**AZ Vocabulary**

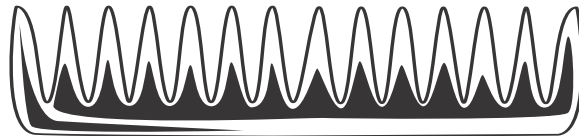
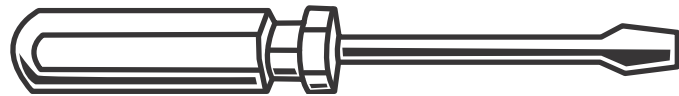
1. You can compare and order objects by **length**.

Line up the objects.

Look to see which object is **longest** and which is **shortest**.



Then put the objects in order from longest to shortest.



The glue stick is the \_\_\_\_\_ object.



2. Complete the sentences.

**Line A** \_\_\_\_\_

**Line B** \_\_\_\_\_

**Line C** \_\_\_\_\_

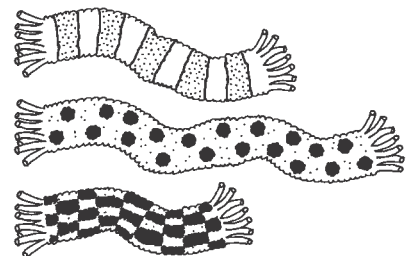
Line   C   is the longest.      Line   A   is the shortest.

**On the Back!**

3. Use the clues to color the scarves.

The shortest scarf is red.

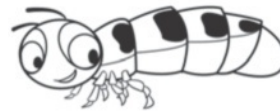
The green scarf is longer than the blue scarf. Explain how you found the green scarf.



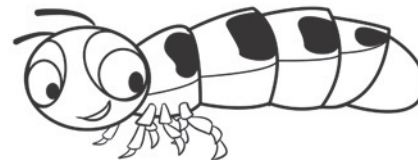
# Glowworm Math

Did You Know? Some animals glow! A glowworm is a type of beetle. Chemicals make its tail light up. The beetle glows to scare away enemies. It also glows to call other bugs to it.

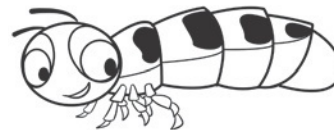
- 1 Draw lines to show which glowworm is longest and which is shortest.



longest



shortest



- 2 Draw three glowworms of your own. Draw them in order from shortest to longest.

- 3 **Extension** Draw three glowworms of different lengths. Cut them out. Ask a partner to put them in order from longest to shortest.

**AZ Vocabulary**

1. You can compare the **lengths** of 2 objects that are not next to each other. Use the white ribbon. Compare the lengths of the toy cars.



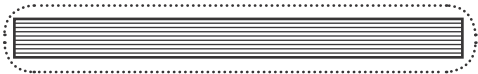
The gray car is **shorter** than the ribbon.

The black car is **longer** than the ribbon.

So, the gray car is \_\_\_\_\_ than the black car.

2. Circle the striped or gray object that is longer.

Use the white ribbon to help.



Circle the dotted or black object that is shorter.

Use the white ribbon to help.



**On the Back!**

3. Draw a ribbon. Draw an object that is shorter than the ribbon. Draw an object that is longer than the ribbon.